

# EASY TO OPEN

as Open Library







The NeXGeneration always in sight!

## EXPERIENCE COSY HAPPINESS

The library is a place to discover, experiment, learn, read or meet. Participate in events, be inspired, simply feel at home. The library is also a place of peace and relaxation. Health and wellbeing are linked to culture and education. Enjoy the library with all its facets. More is expected by your community today.

More than 80 percent of libraries in Denmark are Open Libraries today. And have been for more than ten years. Weekly opening hours have sometimes been doubled. In addition to staff-supported hours, these Open Libraries, as hygge places, make their visitors self-sufficient and happy.

## #BIB4ALL AT ANY TIME

### Opening hours to suit any needs

Open early in the morning, over lunch, late at night or on Sundays to offer your community more flexibility to use your services.

### Increase visits + item circulation

Attract new customers with new opening hours. Make your library services as accessible as possible; increase the ROI of your library investments.

### Up-to-date reputation within the community

As a «public living room» you will increase the importance of your library as an attractive and safe place to learn, work, meet, read & more.

### New resources thanks to automation

Relieve your staff of routine tasks so that they can take on other valuable tasks.

### Sustainability + ergonomics

The future starts today: Benefit from forward-looking, sustainable technologies and efficient, ergonomic processes. An integrated solution ensures barrier-free use.





IT'S SO EASY!



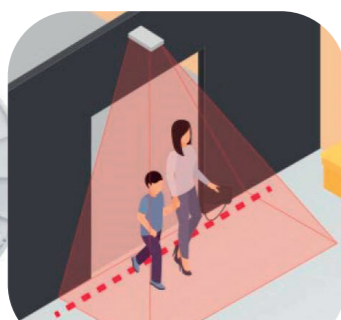
## RELIABLE ACCESS

- › Automatic door opening with library card (optional + pin)
- › Weather-resistant access panel
- › Wall mounting, glass door mounting or pedestal mounting
- › Barcode + Mifare user cards



## MODERN CAMERAS

- › Data protection compliant
- › Controlled + secure at unmanned times
- › Notifications via app in case of emergency
- › Modern user management



## PRECISE VISITOR COUNTING

- › Long-proven retail hardware
- › In-house customised software
- › Direct mounting to the ceiling
- › Measurement based on body sizes
- › Expandable with freely definable room occupancy tool



FLEXIBLE + INTEGRATED + INDIVIDUAL

### Check-out, return + more

Connected with your self-checkout and return systems as well as your complete infrastructure\*, the result is a complete, fully automated solution for autonomous visitors that is centrally controlled.

### Safe + comfortable

Cameras and loudspeakers provide additional information and security. They communicate directly with the security service or with the service counter at staff-assisted times.

### Uncomplicated + prompt

Web-based administration requires no software installation. This means: no effort for the in-house IT regarding updates. If necessary, the Nexbib team can access the system remotely at any time and help with the configuration.

### Suitable for your library + centrally controlled

The software and all hardware components are fully flexible, modularly combinable and centrally controlled. The integration into the LMS is self-evident. Installation and configuration (e.g. age restrictions, access times) are always defined according customer-specific needs and ideally for your library environment.

\* Lighting, heating, alarm system, customer PCs, photocopiers, payment terminals.



## RE:IMAGINE with Nexbib

We keep both feet on the ground, but always think one step ahead! Together with you, we are pulling in the same direction to simplify participation in education and culture and to strengthen social cohesion. This requires dynamic library concepts, flexible, modularly expandable RFID self-service technologies for borrowing and returning items. All-encompassing, completely integrated Open Library solutions provide a new, essential freedom. And intuitive software and apps form the heart of modern, reliable total solutions.

You will like our Nordic roots: They stand for technological innovations and sleek designs. We listen, we inspire, we act sustainably and we interact personally.

Let's inspire  
your community  
together.



Hey there, I'd love  
to know more!

So what's the first step?

Ask us! 

+44 161 543 1927  
info-uk@nexbib.com

www.nexbib.com



**nexbib**  
your library company